

13 801 892



- 200mm projection
- circular normal flow
- rosette Ø 55 mm
- hole diameter 37 mm
- 1/2" connection
- max. flow 29 l/min at 3 bar flow pressure
- WRAS 1811020

|   |                                     |               |
|---|-------------------------------------|---------------|
|  | Platinum                            | 13 801 892-08 |
|  | Chrome                              | 13 801 892-00 |
|  | Brushed Platinum                    | 13 801 892-06 |
|  | Dark Chrome                         | 13 801 892-19 |
|  | Brushed Durabrass<br>(23kt Gold)    | 13 801 892-28 |
|  | Matte Black                         | 13 801 892-33 |
|  | Brushed<br>Champagne (22kt<br>Gold) | 13 801 892-46 |
|  | Champagne (22kt<br>Gold)            | 13 801 892-47 |
|  | Brushed Chrome                      | 13 801 892-93 |
|  | Brushed Dark<br>Platinum            | 13 801 892-99 |

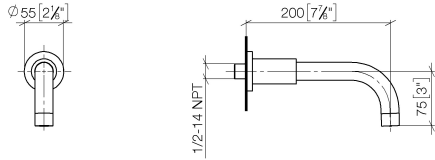
Recommended miscellaneous



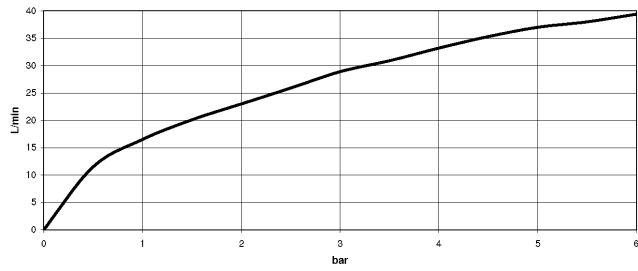
- Concealed wall elbow -** 35 085 970 90
- max. recess depth 163 mm
  - min. recess depth 90 mm

13 801 892

mm [inches]



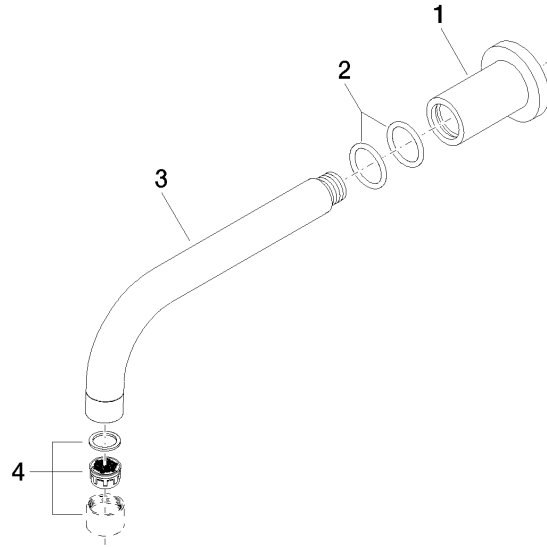
Flow rate chart



Certificates

LGA\_18923. IAPMO\_4976 (6). WRAS\_1811020.

13 801 892



### Spare parts list

| No. | Item Number        | Name    | Quantity used | Delivery time |
|-----|--------------------|---------|---------------|---------------|
| 1   | 09 27 89 009-08    | rosette | 1             | 40            |
| 2   | 90 14 10 025 00 90 | seal    | 2             | 2             |
| 3   | 04 28 22 198 20-08 | spout   | 1             | 40            |
| 4   | 90 23 01 024 00-08 | aerator | 1             | -             |

Spare part can no longer be ordered, please order the replacement item